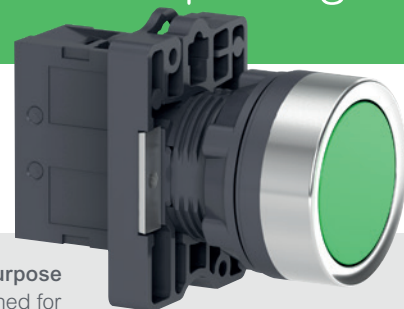




Cost-effective and reliable switching

Easy Harmony XA2 pushbuttons, switches, and pilot lights.

Easy Harmony XA2 Ø22mm plastic pushbuttons, switches, and pilot lights address the challenges faced by new economies. They are fit for purpose at affordable prices with no compromise on ease of use, robustness, and availability – the core values supported by a worldwide leader in automation.



Fit for purpose

- Designed for numerous applications
- Easy selection of key functions
- Modern, ergonomic design

Designed for easiness

- Mounting with a single nut
- Anti-rotation plate
- Anti-loosening screw clamps

Strong on robustness

- Conforms to international standards
- Tested and certified performance

Always available

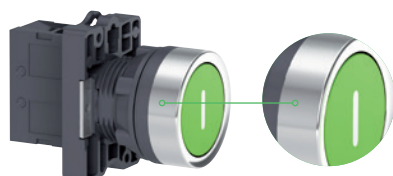
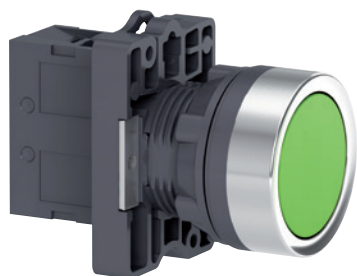
- Wide availability
- Worldwide technical assistance

se.com/easyharmonyxa2

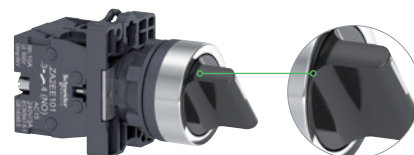
Life Is On

Schneider
Electric

Easy Harmony XA2



Metallic-looking ring



Ergonomic curve

Type of functions	Contact functions			Contact and signaling functions	Signaling functions
Type of products	Pushbuttons	Emergency switching off pushbuttons	Selector and key switches	Illuminated pushbuttons	Pilot lights
Description of range	Pushbuttons, spring return: flush push, mushroom head, and push-push	Emergency switching off pushbuttons: turn to release, and push-pull	Selector switches, 2- or 3-position standard, or long handle key switches	Illuminated pushbuttons with integral LED, spring return: flush push	Pilot lights with integral LED
Type references	XA2EAxx/EAxxxx/ ECxx/EH0xx	XA2ETxx/ESxxx	XA2EDxx/EJxx/ EGxx	XA2EW3xxx	XA2EVxxLC/ XA2EVxDxLC

se.com/easyharmonyxa2

Life Is On

Schneider
Electric

Schneider Electric Industries SAS
35, rue Joseph Monier – CS30323
F92500 Rueil-Malmaison, France
Tel: +33 (0)1 41 29 70 00